

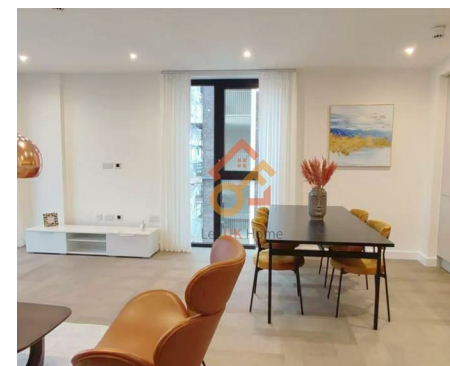
萊英家
Let UK Home

2 Bedrooms

Flat

Located in London

£4,000 Per Month



info@letukhome.co.uk

<https://www.letukhome.co.uk/>

02045348146



2 Merino Gardens London

E1W 2DR



Let UK Home present this brand new 2 bedroom property in 2 Merino Gardens in London Dock.

This property comprises a large bright open plan kitchen and living room leading to a large private balcony with great views, two double bedrooms with wardrobe (master en-suite), a large family sized bathroom and ample storage. A virtual viewing is provided.

Residents of this exceptional development have exclusive use of the spa, fitness centre, swimming pool, sauna, cinema, virtual golf suite, squash room, residents lounge, steam room and treatment room. Furthermore, residents will also benefit from a 24 hour concierge and an unrivalled selection of shops, bars, restaurants, leisure facilities and beautiful courtyards.

The apartment is located near the riverside, close to London's financial district and St Katharine Docks. It is within walking distance of Tower Bridge. Gauging Square is the center of the entire community, with restaurants, cafes and bars on both sides, and Sainsbury's supermarket brings convenience to residents' daily life.

2 Merino Gardens London

£4,000 Per Month



- 12th Floor
- 24h Security
- The Gym
- Squash Court
- Sauna & Steam Room
- Concierge Service
- Swimming Pool
- Cinema & Game Room
- The Spa
- Virtual Viewing Available





6/F Two Kingdom Street
London
W2 6BD

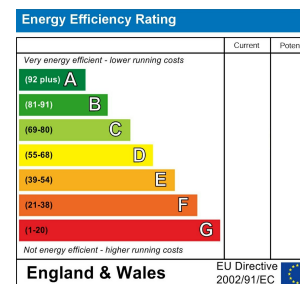
02045348146

info@letukhome.co.uk

Council Tax Band: New Build

Local Authority:

Agents Note: Whilst every care has been taken to prepare these particulars, they are for guidance purposes only. All measurements are approximate and are for general guidance purposes only and whilst every care has been taken to ensure their accuracy, they should not be relied upon and potential buyers/tenants are advised to recheck the measurements.



<https://www.letukhome.co.uk/>